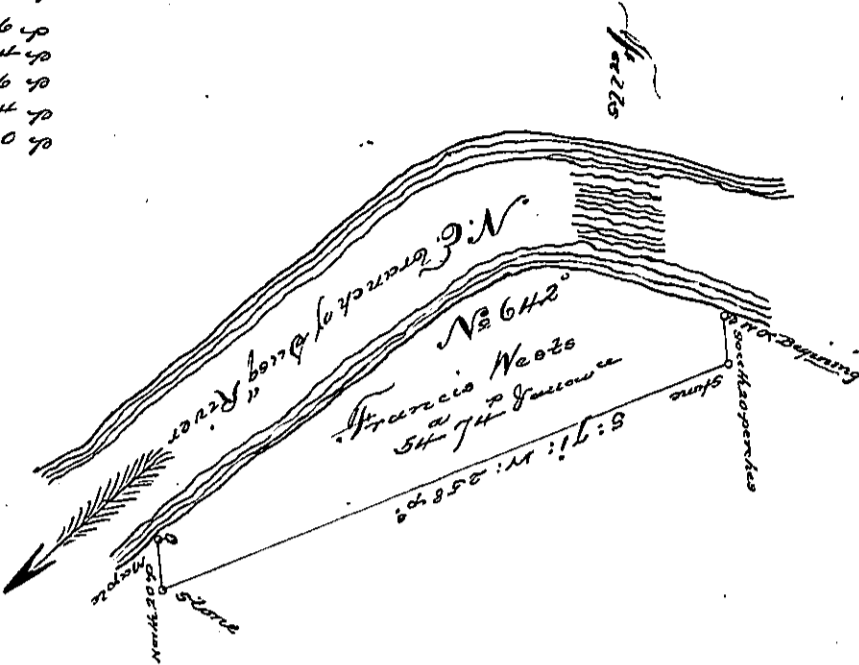


Courses up the River from the  
Moule to the White Oak

N. 53. E.	105 7/8
N. 54. E.	30 7/8
N. 58. E.	44 7/8
N. 77. E.	16 7/8
S. 84. E.	14 7/8
S. 71. E.	26 7/8
S. 85. E.	24 7/8
S. 64. E.	20 7/8



A Draught of a Tract of Land called Wests Fisheries. Situate on the South East side of the North East branch of Susquehanna opposite and below the Falls. Part opposite other land surveyed for Francis West in Northampton County, containing fifty four acres & seventy four perches besides the usual allowance of 6 1/2 Cent for Roads. Surveyed the 16<sup>th</sup> June 1771, for the said Francis West. In pursuance of an order dated the 3<sup>rd</sup> day of April 1769, Number 642.

Jn. Cha<sup>s</sup> Stewart. Dep<sup>y</sup> Sur<sup>t</sup>

To John Lukens Esq<sup>r</sup>  
Survey<sup>r</sup> General

IN TESTIMONY that the above is a copy of the original remaining on file in the Department of Internal Affairs of Pennsylvania, made conformably to an Act of Assembly approved the 16th day of February, 1833, I have hereunto set my Hand and caused the Seal of said Department to be affixed at Harrisburg, this first day of February 1898

*James W. Latta*  
Secretary of Internal Affairs.